

Trail to Explore in Summer

Please do not harm any plants or insects. Take nothing but photos.

F Start. Can you see or hear any birds?

The Robin seems friendly to us but he is really defending his space.

Go through the hedge to find L.

Look out for insects in the trees and wild flowers.



L The Bug Hotel. Can you see insects or spiders making a home?

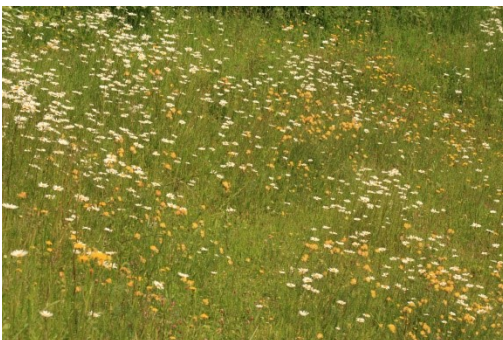


Looking towards the Centre you will see three Oak trees.

The Oak Apple is an insect home. Later in the year this tree will have acorns.

Continue up the grass path to O.

O Curved Bench. Can you see the solar panels on the roof?



From here you can see across Ashford to the North Downs.

Sit down, look and listen for a while.

Carry on towards the stone path and turn left to W.

Trail to Explore in Summer

W Ashford Community Woodland noticeboard.

Can you see the Ash tree leaning over the path? It has flat seeds hanging down.

Walk to the gate and look up for birds. You might see a Kestrel in the sky.

After seeing the meadow from the gate, turn around and go down the stone path and the steps to E.



E Kentish rag stone. Look in the wire cages (gabions) under the long seat.



The Centre is built on this type of rock on the Greensand Ridge. Lizards live in the cracks.

Above the seat is a bank of wild flowers and a wooden sculpture.

Return up the steps to the stone path and turn left to R.

R Trees. Can you see any berries?

Look out for the cherry and plum trees.

At the end of this path you will return to F.

Join the letters, what word have you followed?

